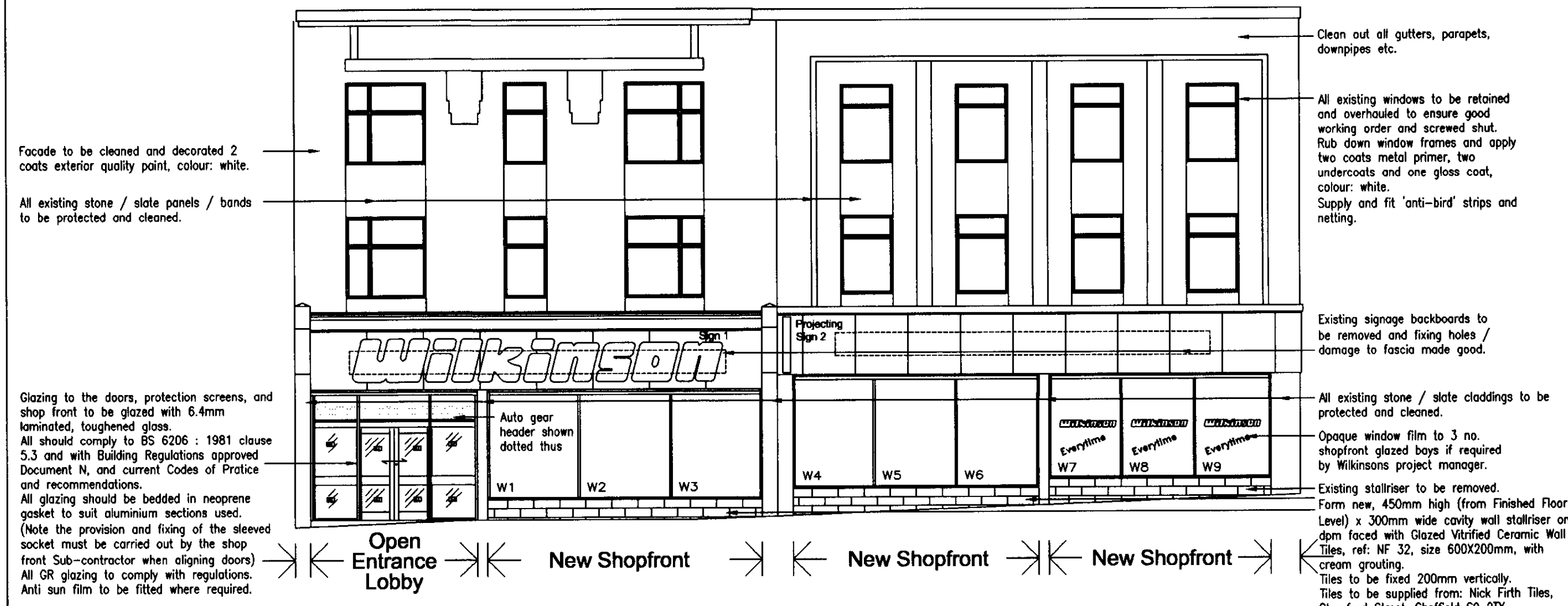
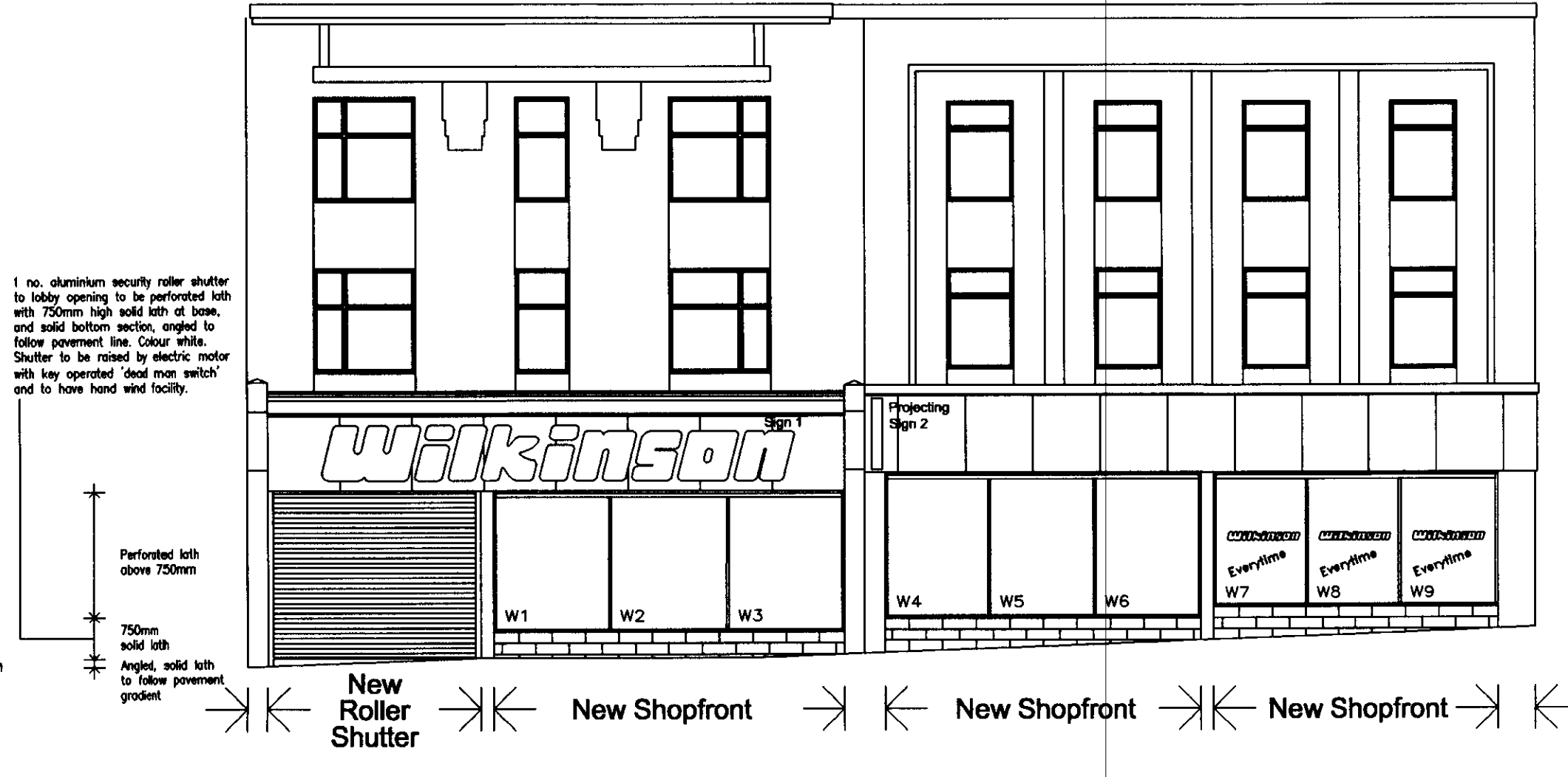


IMPORTANT
THE COPYRIGHTS TO THE DESIGN ON THIS DRAWING REMAINS THE PROPERTY OF THE ARCHITECTS. THE CONTRACTOR, SUB-CONTRACTORS AND SUPPLIERS MUST VERIFY ALL DIMENSIONS, LEVELS, PLINTH HEIGHTS, STEPS & OPENINGS ON SITE BEFORE COMMENCING SHOP DRAWINGS AND/OR THE FULL REQUIREMENTS OF MUNICIPAL AND/OR OTHER LOCAL AUTHORITIES MUST BE ADHERED TO.

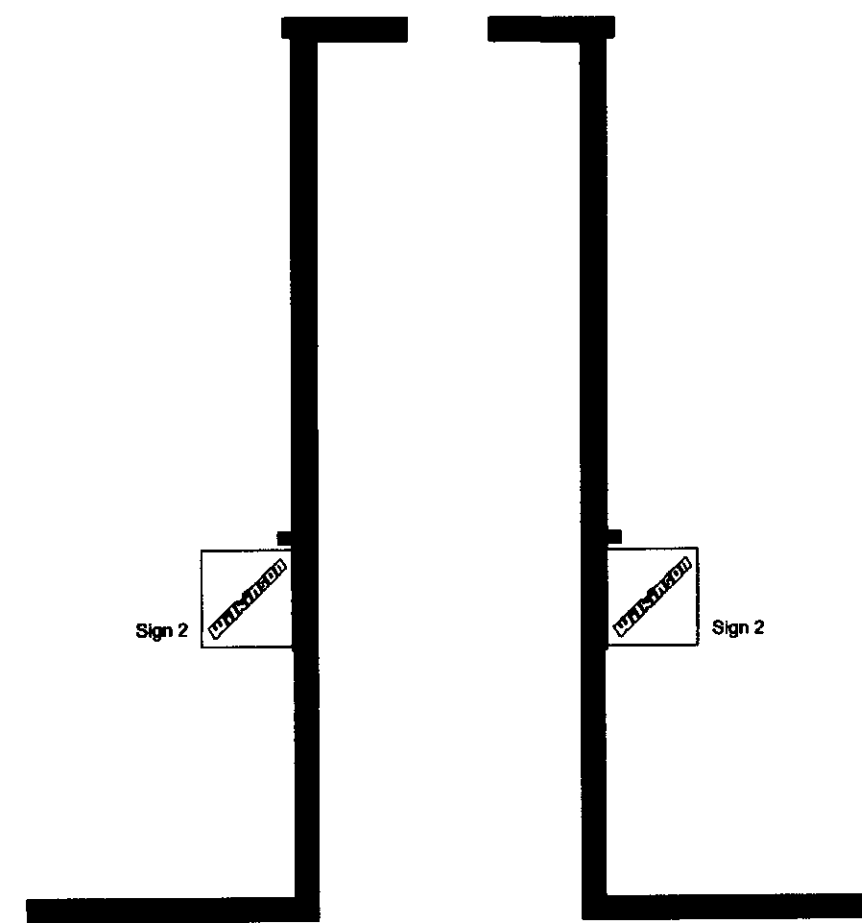
PRELIMINARY :
Subject to detailed survey
being undertaken



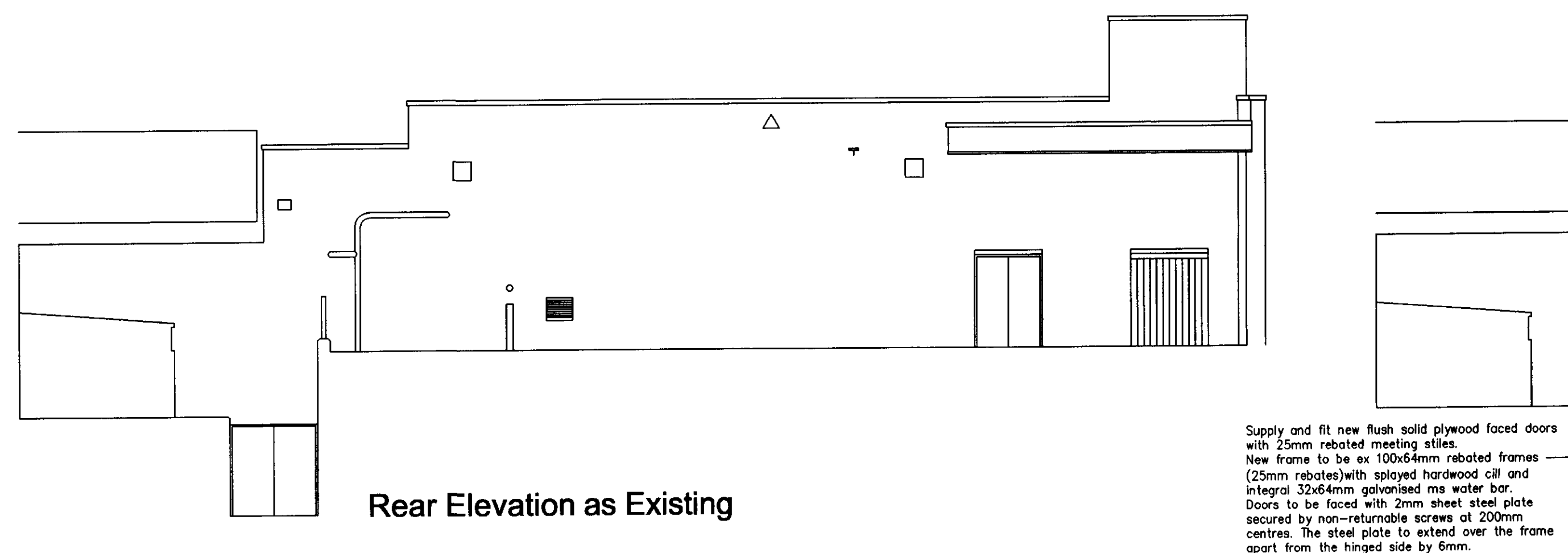
Front Elevation as Proposed showing New Shopfront



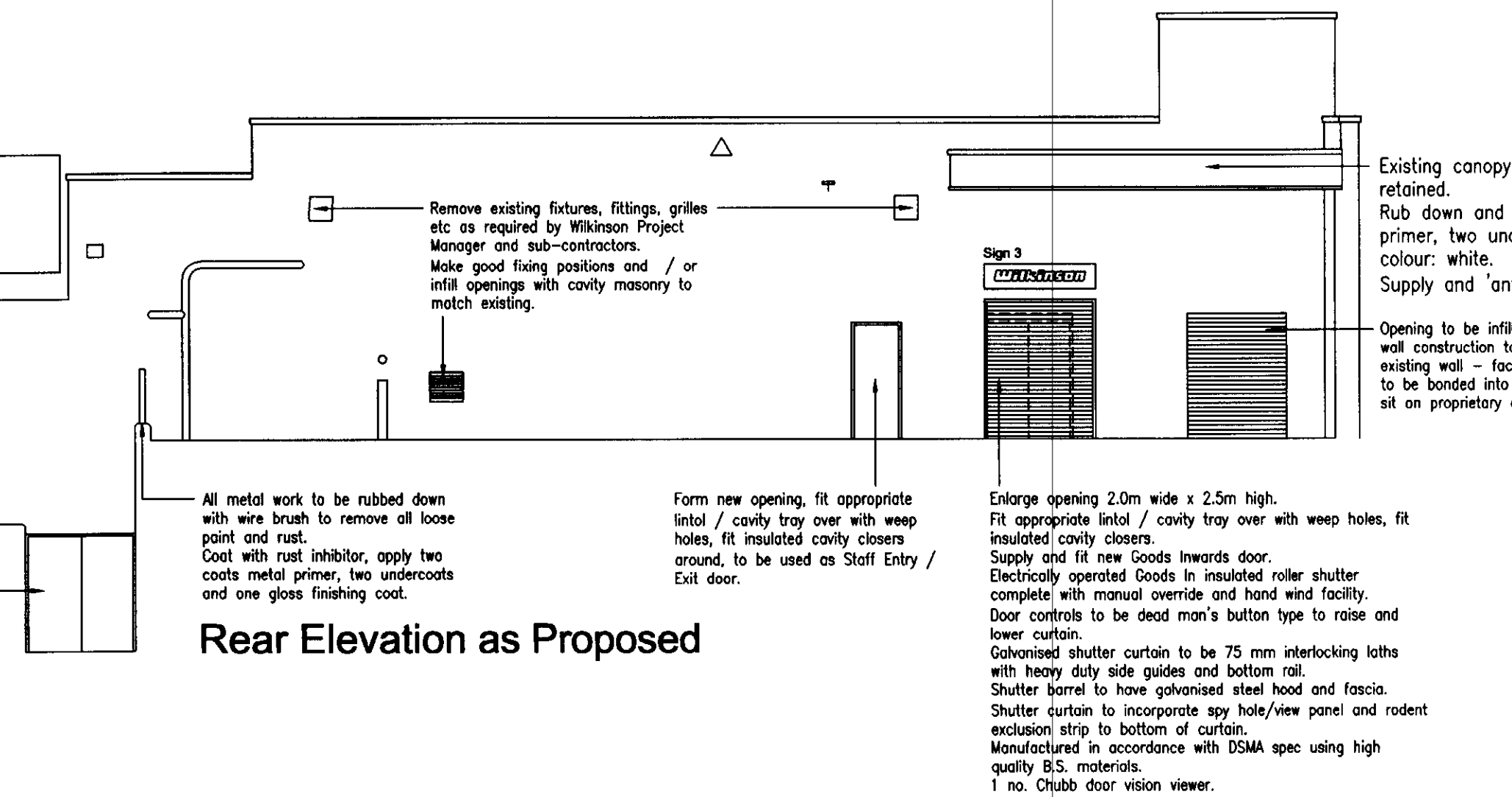
Front Elevation as Proposed showing New Roller Shutter



Projecting Sign 2 Elevations



Rear Elevation as Existing



Rear Elevation as Proposed

LED Signage Specification

Wilkinson Built Up Letters

To be manufactured from 2mm (14g) aluminium sheet with welded joints, and front edge lip to be 45mm at 1000mm letter height (proportionally smaller dependent on letter height). Painted Matt Black.
The side returns are 120mm.
Letter faces to be manufactured from 5mm Red Acrylic Plexiglass 2758. The face acrylic is held in place using 2mm x 2mm x 30mm aluminium strips, which are face fixed to the lip during fabrication. Once the face acrylic is placed in the letter these strips are curved over, as on drawing, to hold the acrylic in place.

Letter Backings

Without a Halo - 5mm foamex, with the Red LED's mounted to the front, is fastened to the aluminium letter using 25mm x 20mm x 20mm zinc plated 2mm steel brackets. The brackets are fastened to the 5mm foamex using 3.8 x 16mm aluminium rivets. The aluminium letter is fastened to the 5mm foamex using 4.2mm x 25mm self tapping screws. With a Halo - 5mm foamex, with Red LED's mounted to the front and White LED's mounted to the back, is fastened to a piece of 5mm Opal Polycarbonate Makrolon 2150 using 40mm x 8 screws with 30mm clear spacers to separate the foamex and polycarbonate to allow the halo light to fully diffuse and give an even glow. The same 30mm Clear spacers are used to raise the letter away from the fascia. This creates a halo using 70mm x 6 mild steel Hexagon Coachscrews fixed through the spacer to the fascia. 25mm x 20mm x 20mm zinc plated 2mm steel brackets are fastened to the polycarbonate using 3.8mm x 16mm aluminium rivets. The aluminium letter is fastened to the steel brackets using 4.2mm x 25mm self tapping screws. A 25mm x 30mm White plastic tube is used to pass the wires from the LED's through into the fascia to the power supply.

LED's

Red LED - GEROLSWAS Wide Angle 16 LED's per m.
White LED - GEWHL58 - 55K 26 LED's per m.
The LED's are fastened to the 5mm foamex using 3/8ths x 6 Screws. The LED's do come with VHB tape on every other side, but to create a flexible enough curve without the danger of the strip moving as you apply it, these screws are advised to be added which will eliminate movement of the LED's until the tape is fully cured.

Power Supplies

Red 56 watt Power Unit - GEOLPS3 - This unit has 4 outputs, each with a maximum output of 6.1m of Red LED (totaling 24.4 m per power unit).
White 90 watt Power Unit - GEOLPS3 - This unit has 4 outputs, each with a maximum output of 5m of White LED (totaling 20m per power unit).
Electrical sub-contractor to provide a lighting final circuit for illuminated shopfront signs. The final circuit shall be controlled by a time switch and an override key switch located adjacent to the main entrance doors, final circuit to terminate within 2m of the sign equipment.
Electrical installation works to be completed in accordance with N.C.E.I.C. and to comply with current regulations and legislation.

Shopfront Notes

The 'Entrance' and 'Exit' to be electrically operated auto open/close sliding doors, with door gearing to be 'Dorma ES 90' Automatic operator fitted with presence sensors and one way radar on both sides of door. Door controls to enable doors to be set as 'In and out doors', 'out doors only', 'in doors only', and 'Partially opening', 'Closed' and 'Open'. Doors to be installed complete with matching Bronze Anodised (Vandyke Brown BS08B29) Aluminium valance. Auto doors to operate in 'Fail safe' mode upon activation of the fire system.

Sash work to be Bronze Anodised (Vandyke Brown BS08B29) aluminium (as per shop) front complete with electronically operated automatic sliding doors and manual hinged screens. Doors and side screens to have mid rails, and doors should incorporate thumb turn locks internally, with recessed bolts fitted to inside face meeting stiles and flush bolts to be fitted to inside face meeting stiles. Fix nylon brushes to vertical edges of doors for draught protection screens internally, hinges of outer stiles and having recessed bolts to opposite stile edge into sleeved floor sockets. Doors and protection screens to be glazed with 6.4mm laminate safety glass. (Note the provision and fixing of the sleeved socket must be carried out by the shop front sub-contractor when aligning the doors). Doors to be min 1600 overall, each leaf with 100mm stiles, headrail, bottom rail and middle rail with push pad on external face only, recess bolts and thumb turn lock. All doors to incorporate nylon bushes to the vertical edges for draught protection.

Specialist shop front sub-contractors to provide fabrication drawings for the proposed entrance/exit screens and doors for re-fixing in position as shown.

The shop front is to be generally constructed from 100mm x 45mm white rail: 5010, polyester powder coated aluminium extruded box section, complete with neoprene gaskets and a recessed entrance/exit lobby located on the left hand side. The aluminium section is to be manufactured from W.E.9 - T.F. alloy conforming to BS 1474 1972 and white powder coated to BS 1615 and BS 3987 grade AA25.

Sash work to be taken full height to ensure adequate fixing and stability.
The shop front to incorporate gravity flap letter plate with internal/external flap.

Signage Schedule.

Fascia Signs:
Sign 1 - internally LED illuminated built up letters - 1000mm lettering. Letters fixed direct to wall without halo.

Sign 2 - internally LED illuminated built up letters - lettering size to suit. Projecting sign 1275 high x 1200 projection x 125 thick.

Non Illuminated Sign to rear Goods In area:
Sign 3 - non illuminated, vinyl lettering on aluminium backpanel. 2000x450mm overall backpanel.

A: 21Mar07: Stairriser height increased - brick bonding tiling.

Rev.	Date	Revision

ABACUS
CHARTERED ARCHITECTS AND DESIGNERS
26 VICTORIA STREET
HOCKLEY
BIRMINGHAM B1 3PE
TEL: 0121 608 3700 FAX: 0121 608 3003
e-mail: abacusarch@aol.com

Development
WILKINSON
Sandgate Road
Folkestone
Y07104857

Title
Scheme Design:
Elevations as Proposed

Scale 1:100
Date Nov '06 Drawn RJU

Orig. no 0702 B-14 Rev A

RECEIVED
22 APR 2007